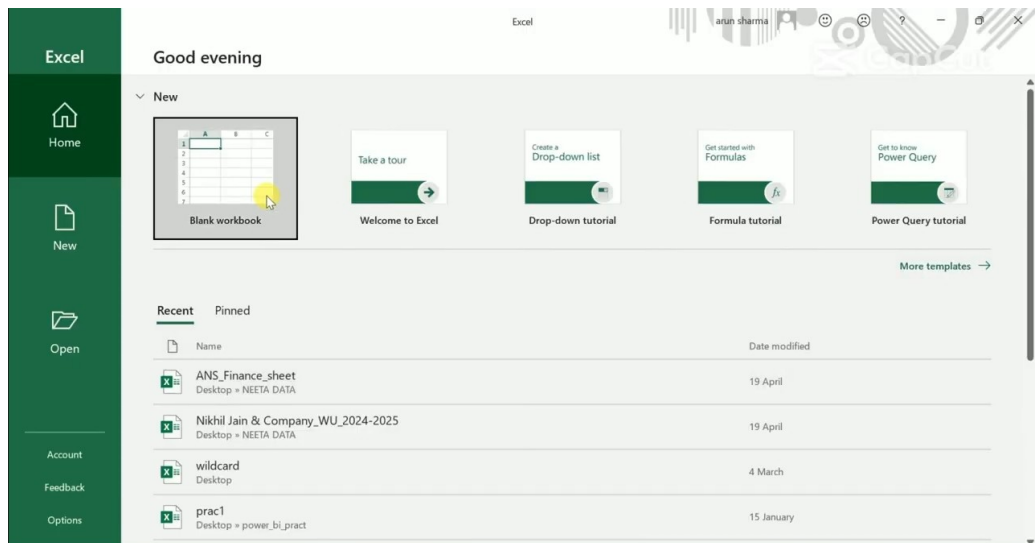
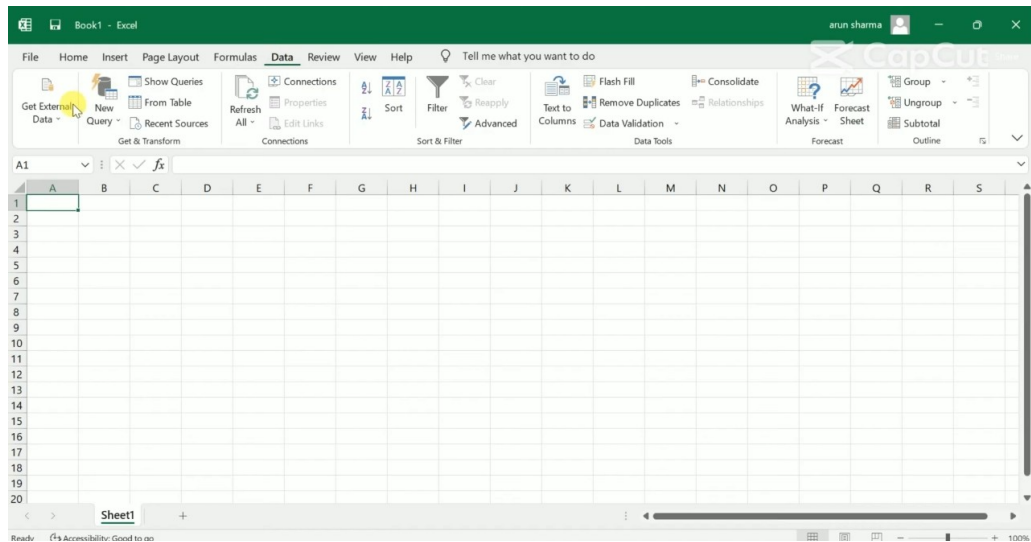


# Pivot Chart

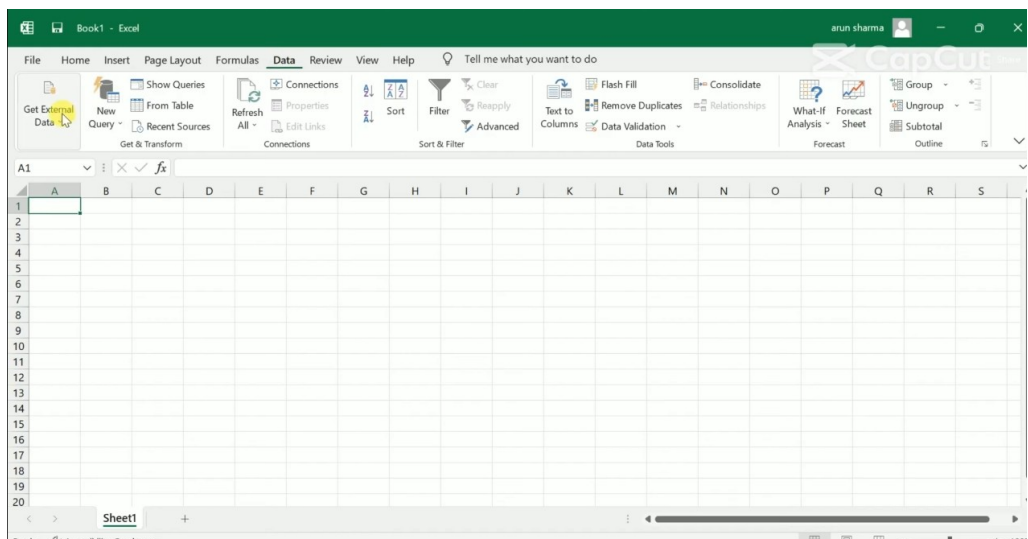
1) Open Excel → A Blank Document



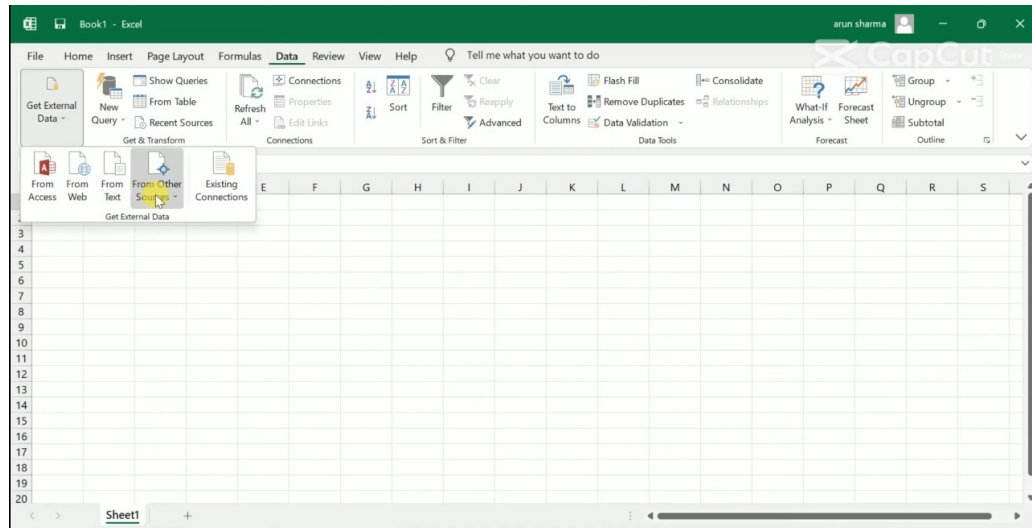
2) Select the Data Tab



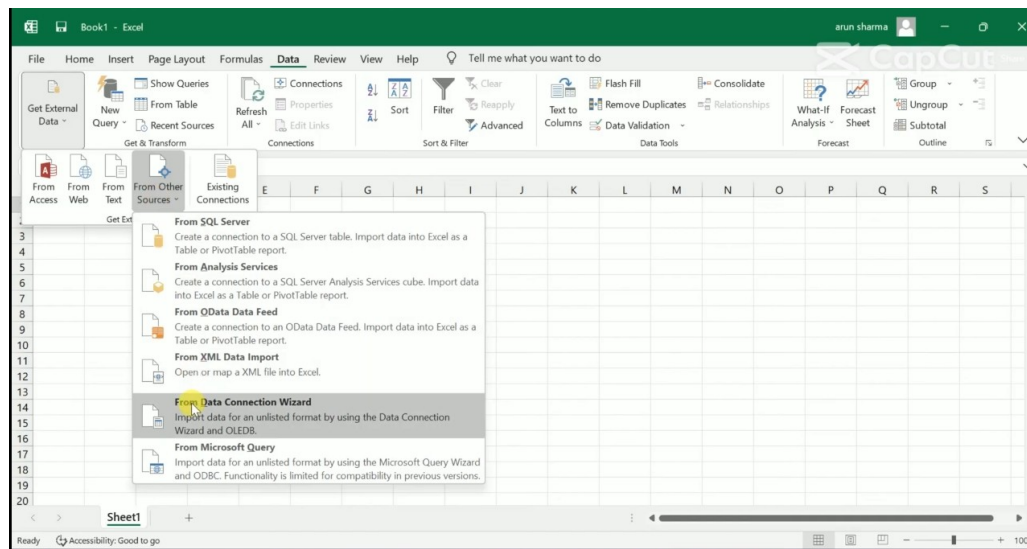
3) Click “ Get External Data ”



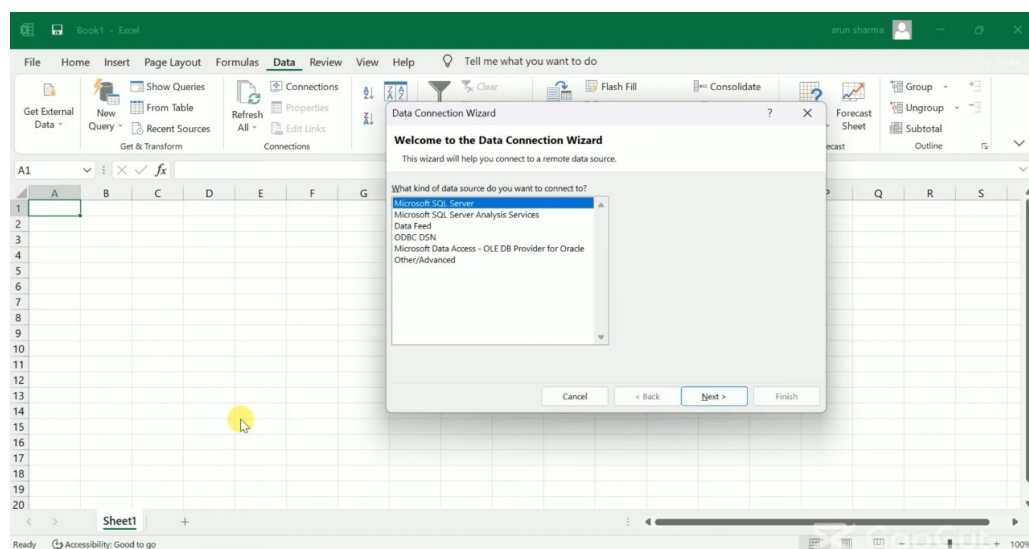
#### 4) Click from Other Sources



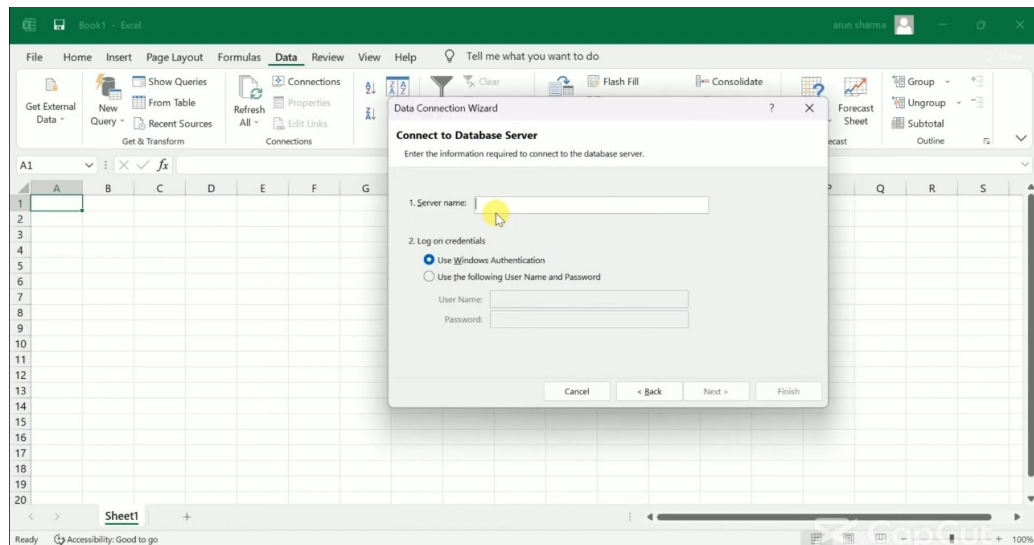
#### 5) Choose From Data Connection Wizard



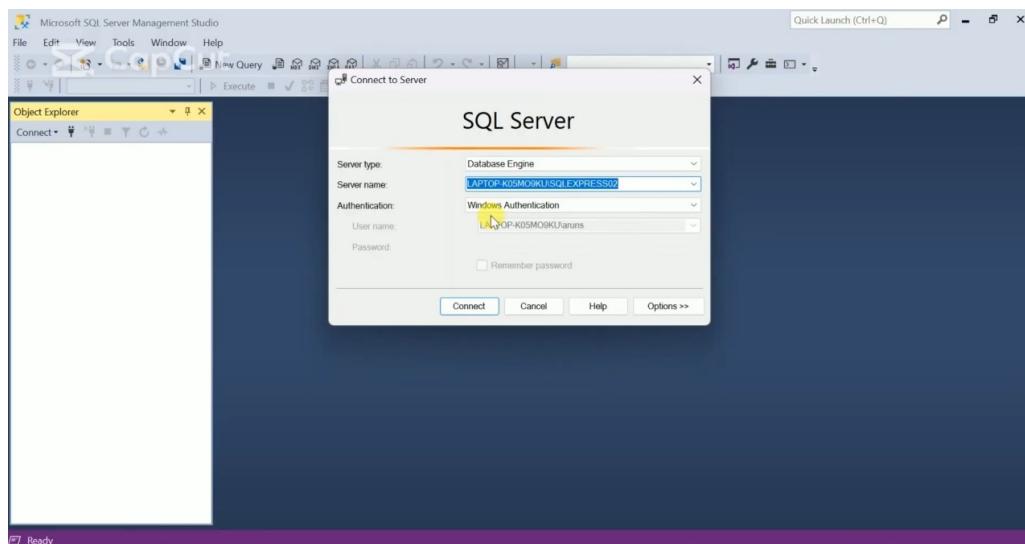
#### 6) From Data Connection Wizard , Select “Microsoft SQL Server” ; Click on Next



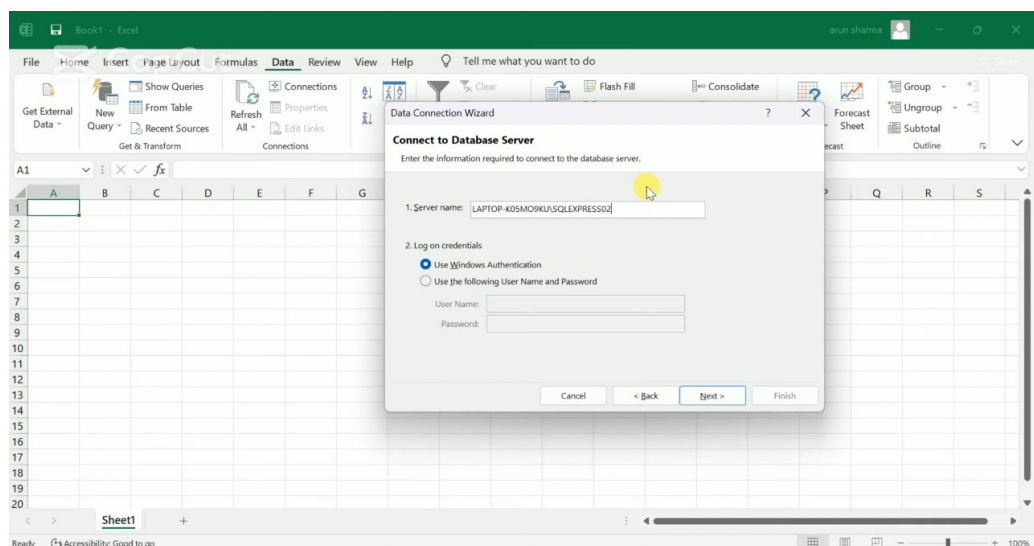
## 7) Enter Server Name and Login Credentials



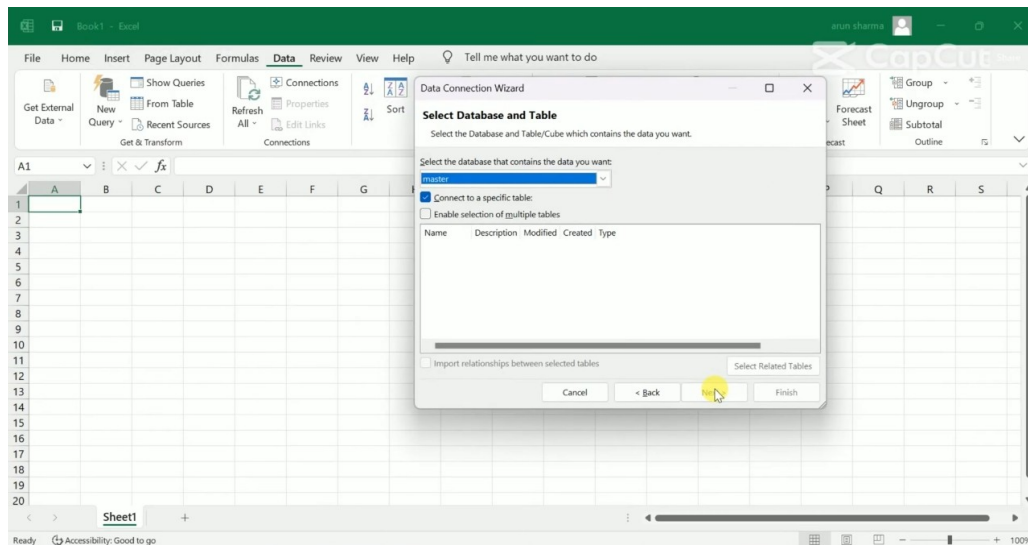
## 8) Open SQL Server Management Studio & Copy Servername



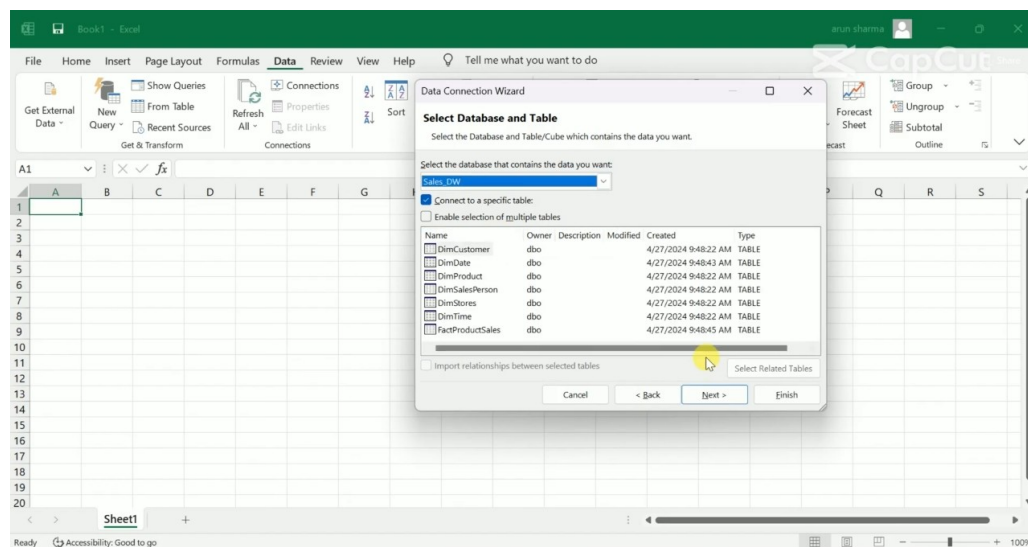
## 9) Paste it in connection wizard



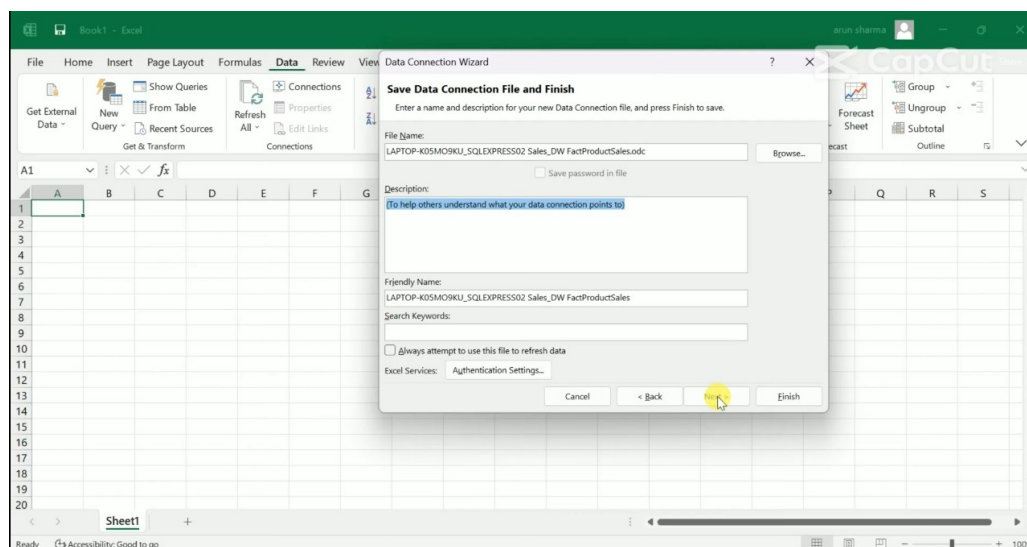
## 10) Select the Database and Table



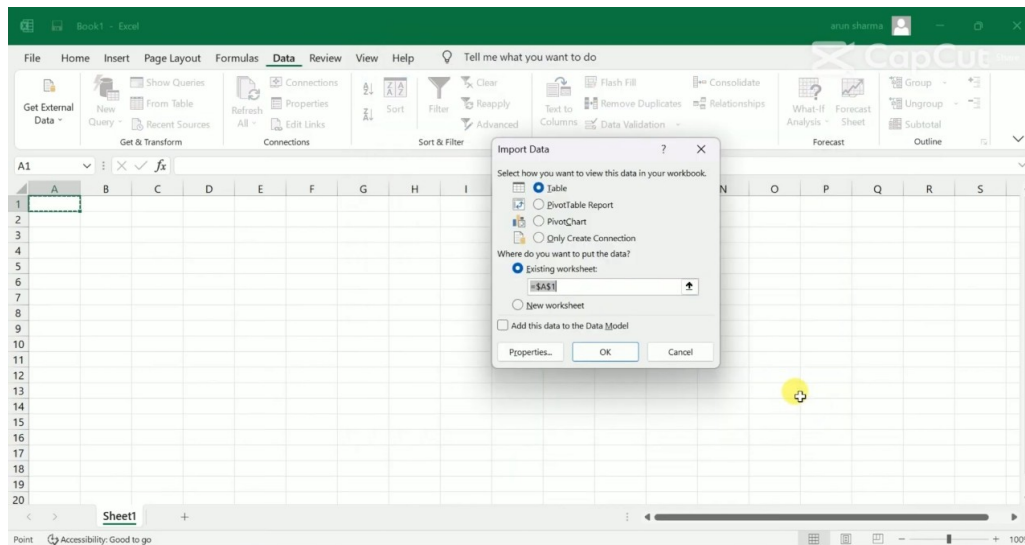
## 11) Selected Sales\_DW & FactProductSales then click Next



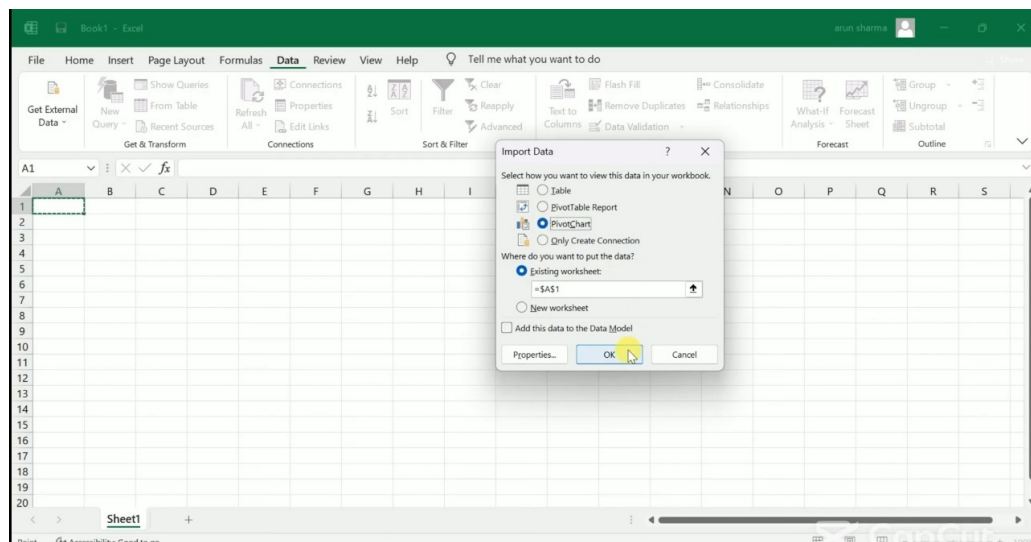
## 12) Asks to Save Data Connection File & Finish, Click Finish



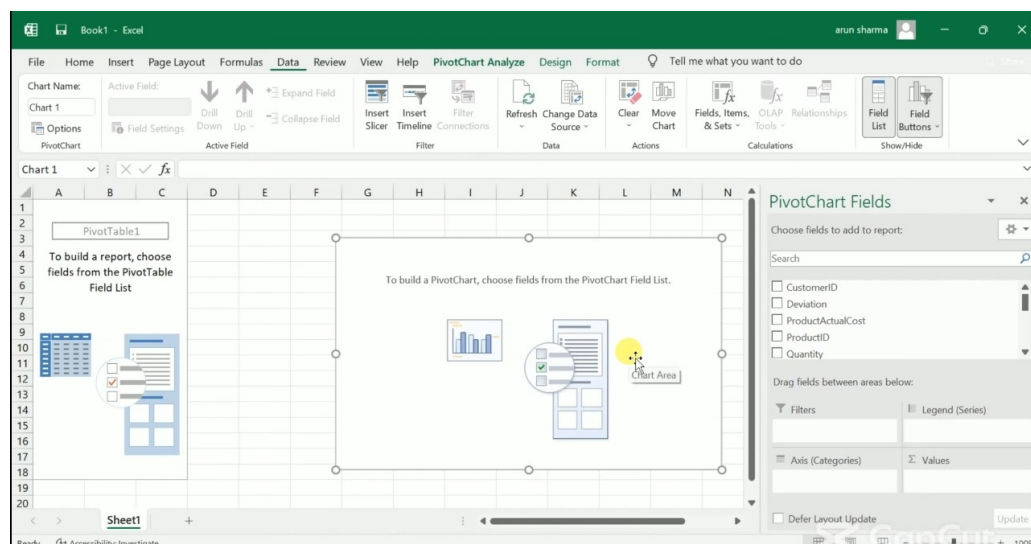
13) Gives you a prompt to Import Data and How you want to view your workbook



14) Choose Pivot Chart then Click OK

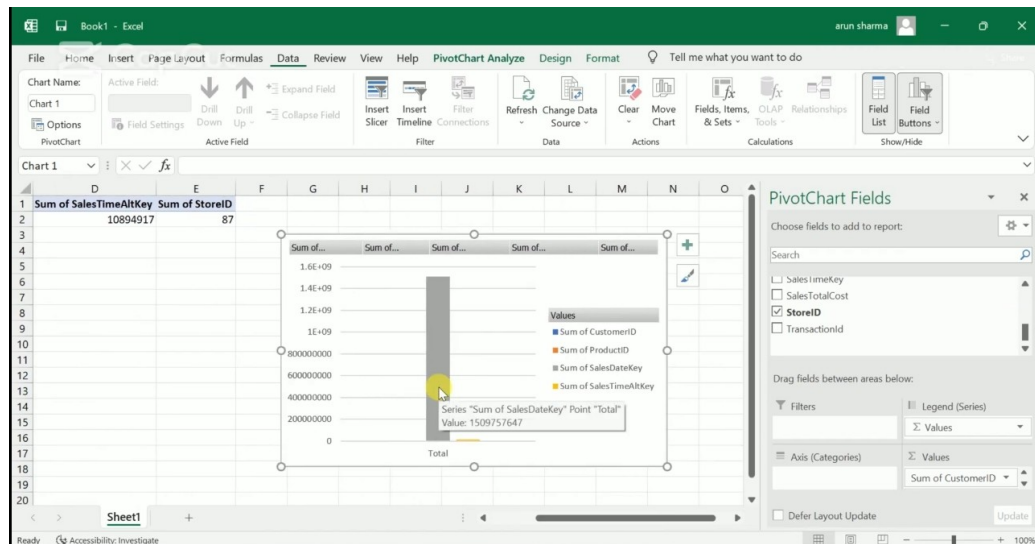


15) Choose required attributes needed to be plot.



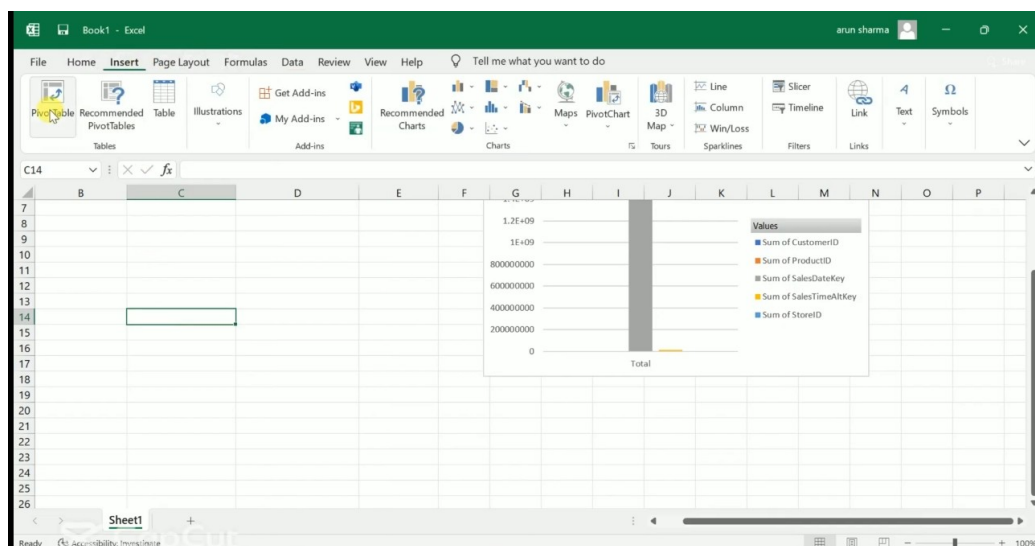


## 16) Your Pivot Chart is Generated

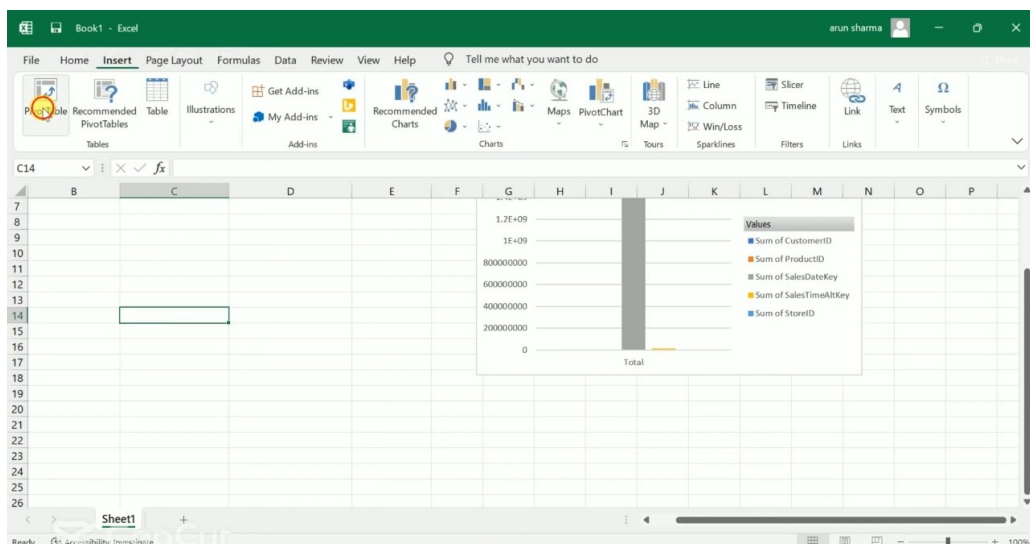


## Pivot Table

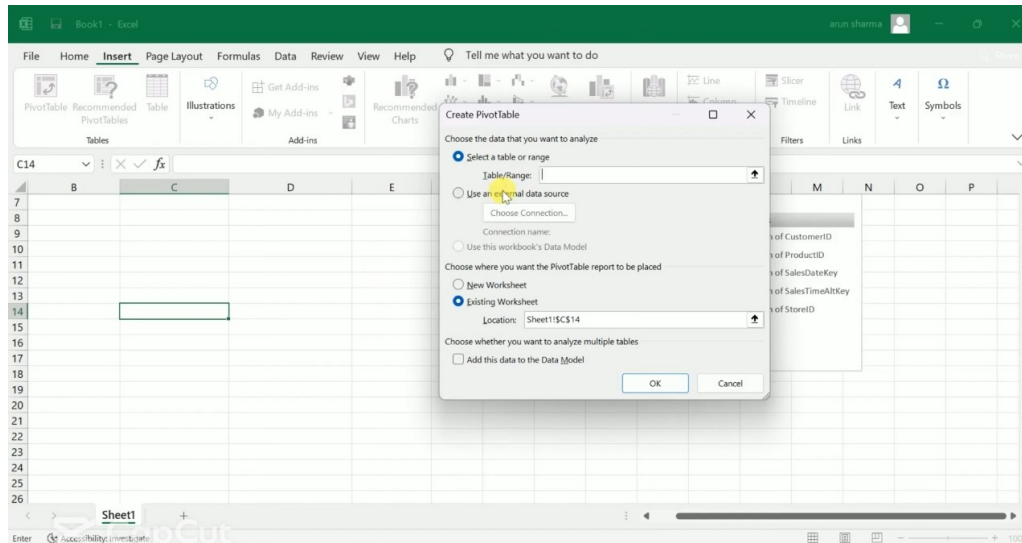
### 1) Choose a cell where you want to add Pivot Table, Click on Insert Tab



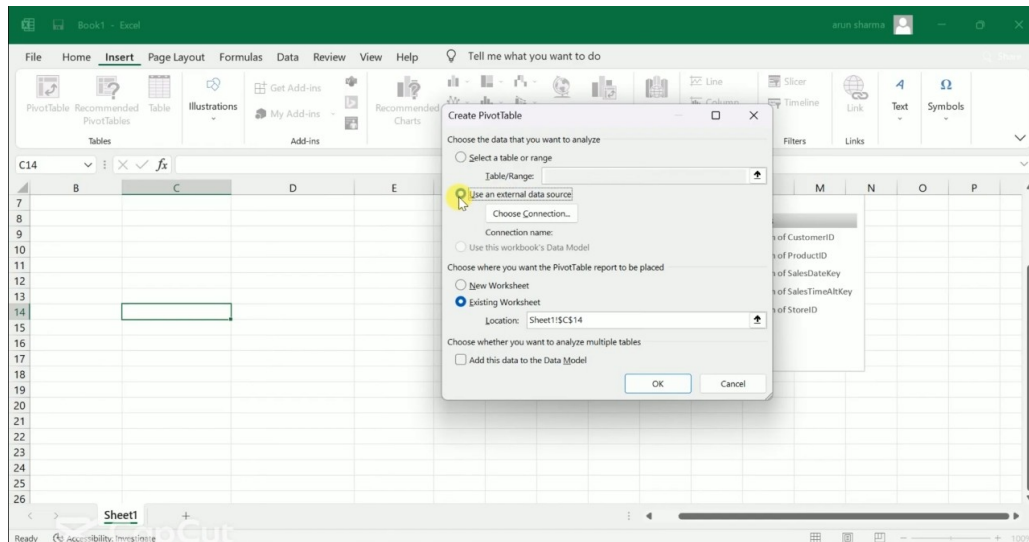
### 2) Select Pivot Table



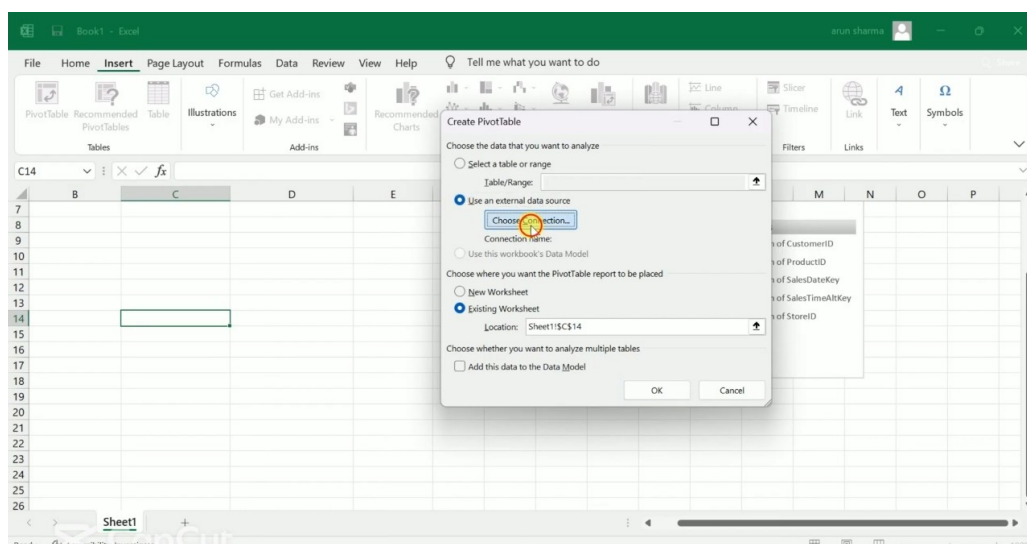
### 3) Prompt to Create Pivot Table appears



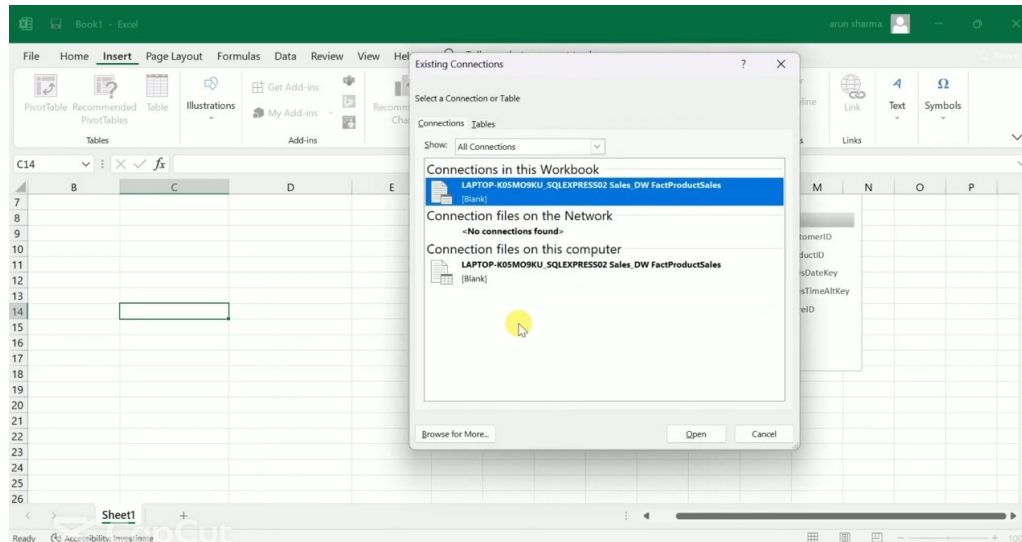
### 4) Select Use an external data source



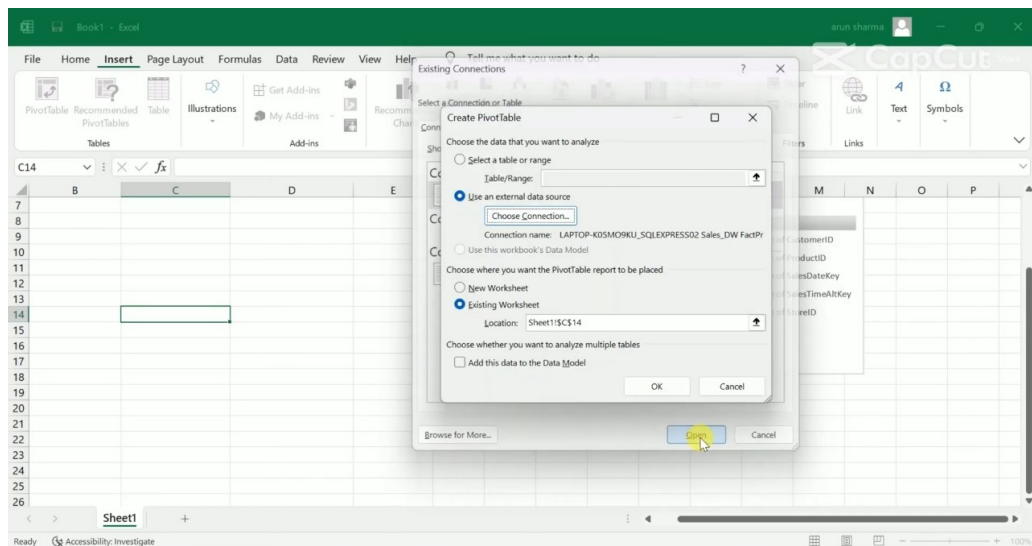
### 5) Click Choose Connection



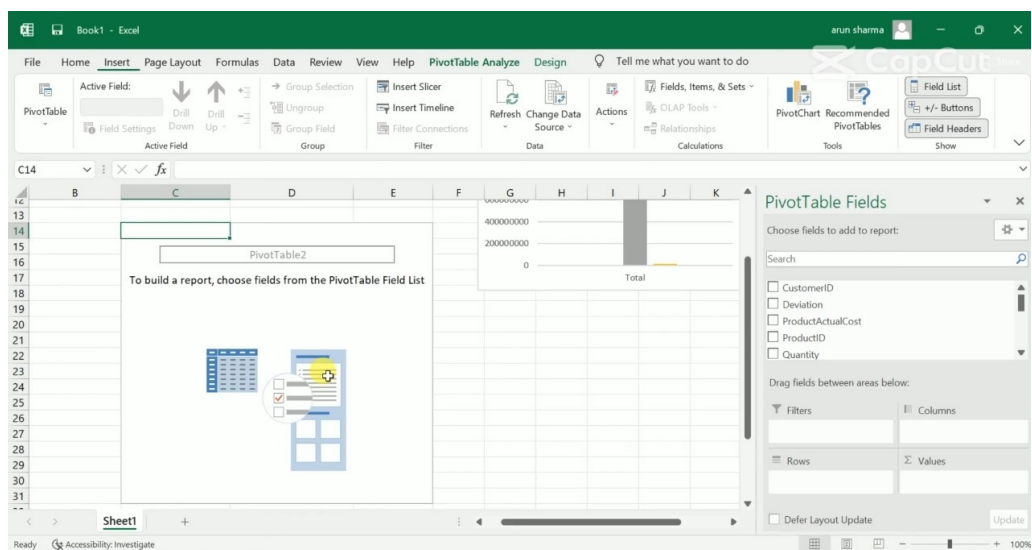
## 6) Choose the connection



## 7) Shows the Selected Connection & Click OK to confirm

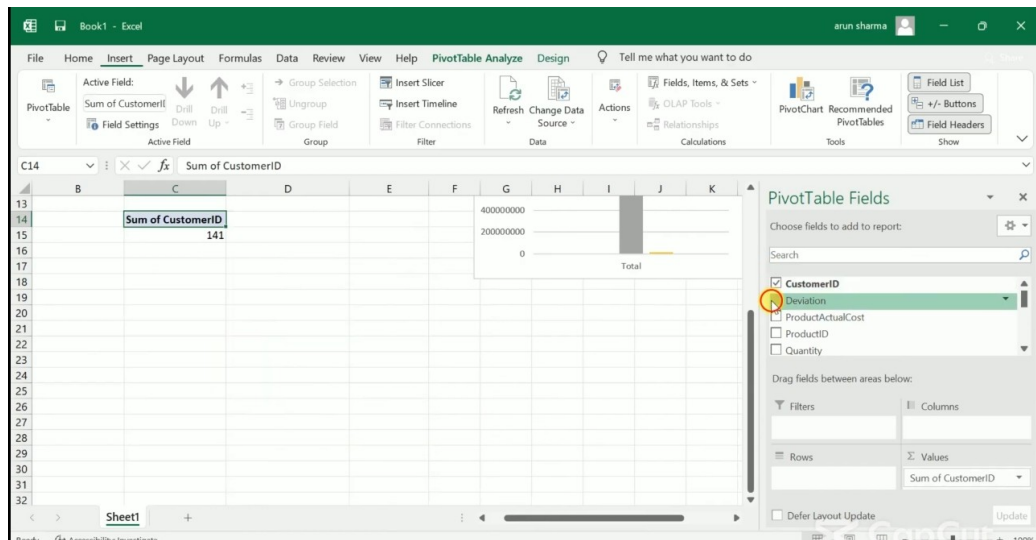


## 8) Basic Pivot Table is created

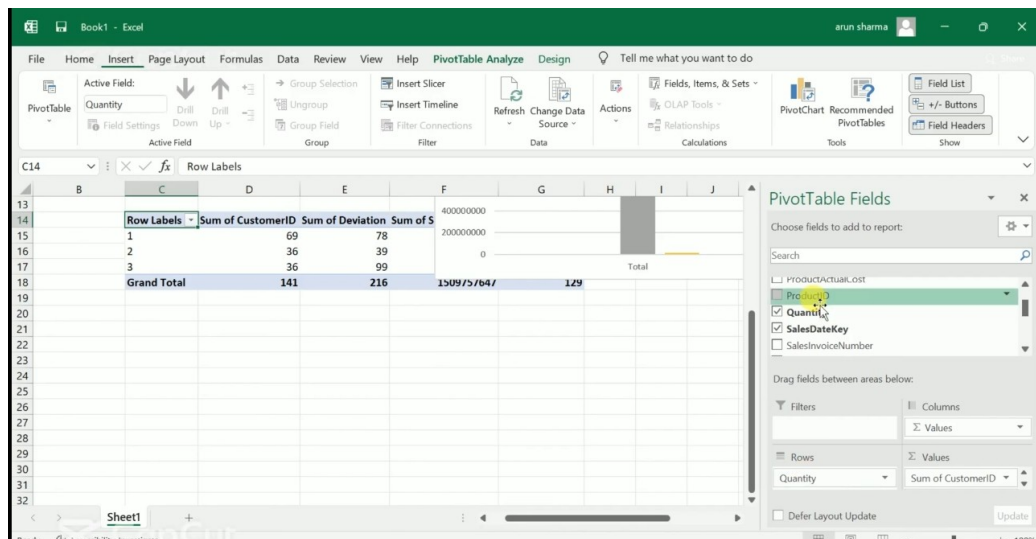




9) Choose appropriate fields to continue



10) To get tabular data put fields in Rows Section, Added Quantity



11) Added Sales to Values, We got our Pivot Table

